



Why Upgrade to Opera 3 SQL SE with Synergy Technology?

Opera 3 SQL Server Edition is the latest addition to the Opera 3 family, built on new technology

For more than 35 years, Pegasus has offered advanced, powerful, and user-friendly business software. Tens of thousands of businesses have relied on its cutting-edge solutions throughout that period to manage their operations more effectively so they can focus on what really matters: building their businesses. Although Opera 3 is still a feature rich solution, it is now 15 years old, and based on technology that is no longer updated. Because of this, Pegasus has released Opera 3 SQL Server Edition.

Opera 3 SQL SE is built on the solid foundation of Microsoft SQL Server, which means it gives you the familiar look and feel of Opera 3 with the added power and reliability of a SQL Server database. The Opera SQL SE system is based on robust technology and was constructed with the needs of common business users in mind, boosting its efficiency and security to a whole new level.

An upgrade to Opera 3 SQL SE, will future proof your vital business processes, while increasing security, reliability and resilience. Synergy Technology have over 25 years' experience with managing our partners' migration to new systems, whilst minimising the impact on their businesses.

Reasons to Upgrade to Opera 3 SQL SE

Enhanced Data Security

Windows authentication is provided via the Opera Service, and this is the only method allowed to update data. It controls the flow of data to-and-from the Microsoft SQL Server databases on behalf of the Opera SE users, ensuring data security and integrity at all times. In addition, there is a secure Opera 3 SQL SE Windows File Repository for reports and files created within the application. These files can be saved securely on the server and can only be viewed by the people who have been given access.

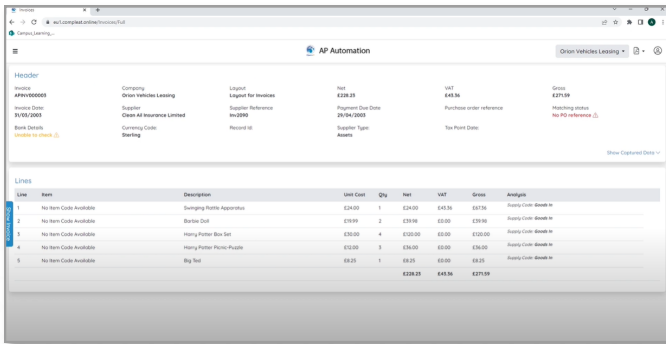
A Future-Proofed Investment

Opera 3 SQL SE is designed using Microsoft's best practice for modern 'client-server' applications and is built on the latest technologies, including 64bit Microsoft .NET framework, C# and SQL Server. This ensures that there will be ongoing development of both the application itself, and the technology it's built on, future-proofing the solution, and securing your investment for years to come.



Background Processes & Scheduling

Data intensive processes can be run on the server side of the application, reducing network load and allowing you to get on with other tasks while they run in the background. In addition to this, operations which can take a long time to complete, such as Purchase Ledger Period End, Payroll Update, or Sales to Nominal Transfer can be scheduled to run out of office hours to avoid disruption and potential clashes with other processes being run in the system.

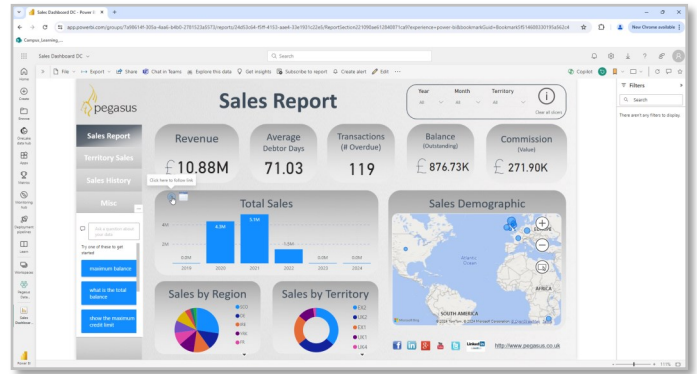


Line	Item	Description	Unit Cost	Qty	Net	VAT	Gross	Analysis
1	No Item Code Available	Bumping Pallets Apparatus	£2400	1	£2400	£480	£2880	Finance Code: Blank 00
2	No Item Code Available	Bottle Duct	£2000	2	£4000	£800	£4800	Finance Code: Blank 00
3	No Item Code Available	Heavy Printer Bin Set	£3000	4	£12000	£2400	£14400	Finance Code: Blank 00
4	No Item Code Available	Mini Printer Paper 1000	£1000	3	£3000	£600	£3600	Finance Code: Blank 00
5	No Item Code Available	Big Top	£300	1	£300	£60	£360	Finance Code: Blank 00
					£23800	£4760	£28560	

Opera 3 SQL SE AP Automation

Modules Not Available for Opera 3

Opera 3 SQL SE has modules and features that can bring you increased operational efficiencies and upgrades that are not available for Opera 3 such as AP Automation and AP Automation online buying. Invoice capture and Accounts Payable Automation for Opera 3 SQL SE provides the simplest way of capturing and processing invoices and gives AP teams complete visibility to process invoices quickly and make smart budgeting decisions. AP Online combines purchasing requests, approvals & order generation, optional receipting, digital invoice capture with 2 or 3 way match and approval automation for purchases made online. This simplifies the entire purchasing process for finance, budget holders and procurement.



Opera 3 SQL SE data displayed in a Microsoft Power BI dashboard

Powerful Integrations

The new Pegasus Data Connector is a powerful tool which provides a user-friendly way to access data from any part of your Opera 3 solution and integrate it with other applications for further analysis and reporting. The extracted data can be used with popular applications like Microsoft Excel, Power BI, and SharePoint, allowing you to create reports and dashboards for better data visualisation. The data can also be used with AI tools to get deeper insights and even configure alerts for critical situations.

Easier Upgrades & Defined Roadmap

The Update Data Structure option, used in Opera 3 to reorganise and re-index the data after a software upgrade, is no longer required because of the use of SQL Server, saving significant time when performing an upgrade, and minimising disruption to your business. Opera 3 SQL SE is also continually developed, and has a defined roadmap of future updates, meaning Pegasus will constantly add new functionality and features to improve the software and adapt it to changing market conditions.



Scan the QR Code

For more information, case studies and videos. Visit our website by scanning the QR code.

